

green
town

GreenTown Rockford

November 12 | Embassy Suites Rockford Riverfront



Fueling Communities Forward

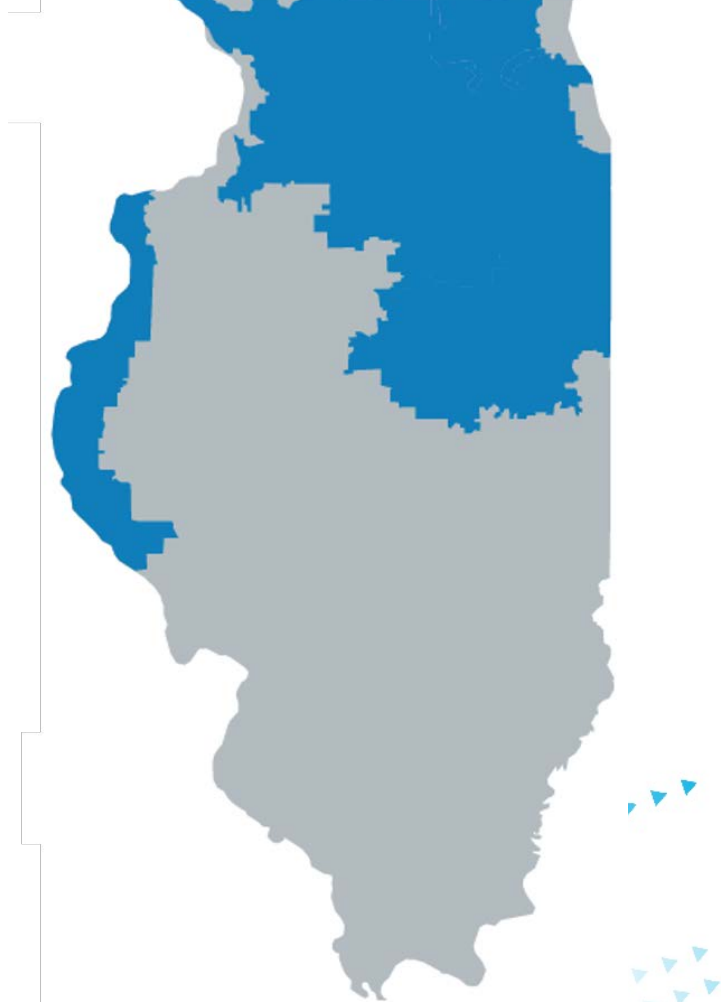
Aaron Miller
Regional Manager of Community Affairs
Nicor Gas



About Nicor Gas

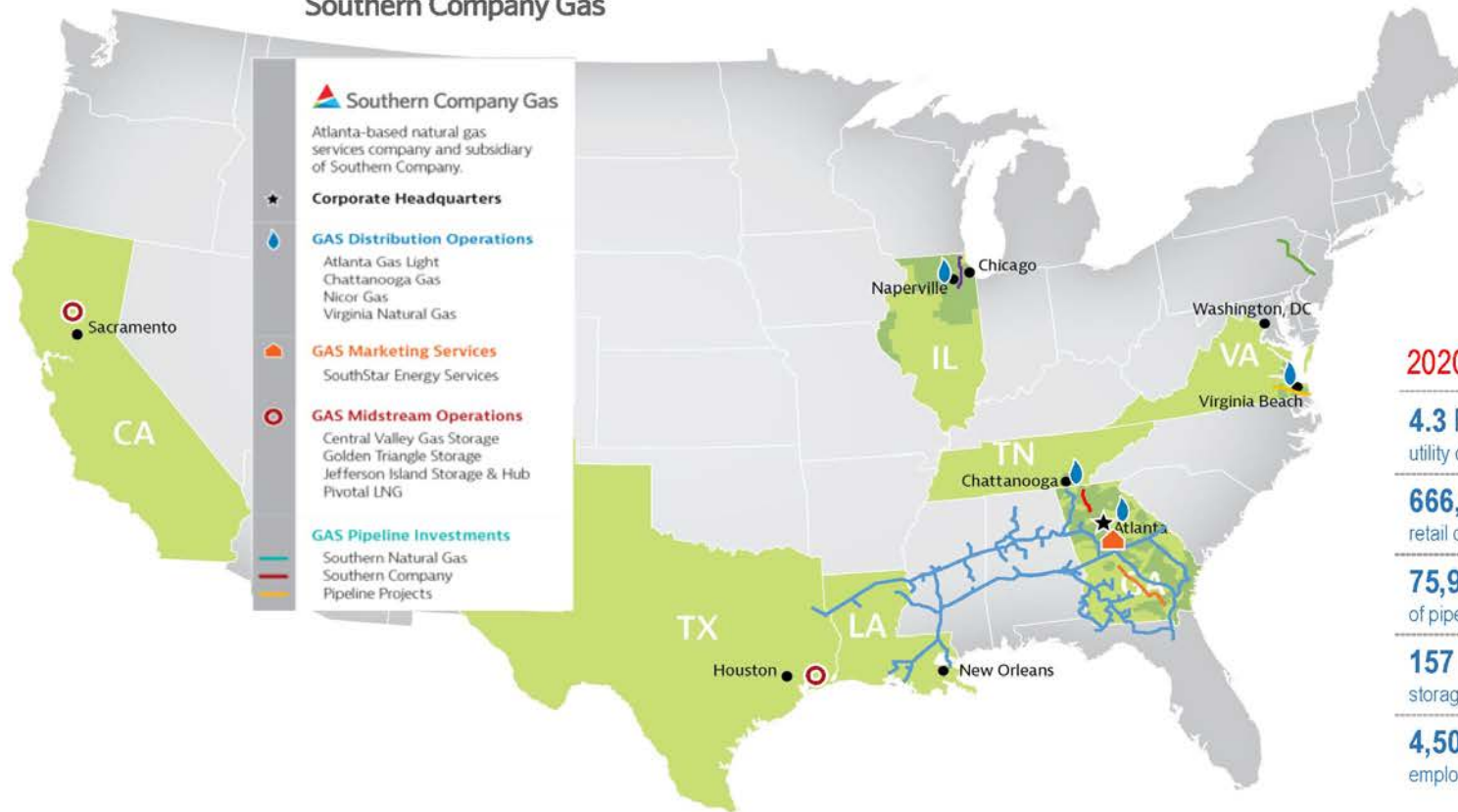
Nicor Gas is the largest natural gas delivery company in Illinois:

- 2.2+ million customers
- 650+ communities served
- 4.6 billion annual therms
- 2,000+ employees
- 34,000 miles of pipe
- 17,000 square miles of service area



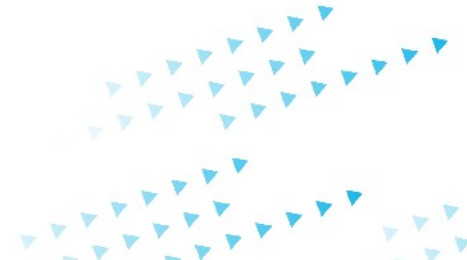
Part of the Southern Company Family

Southern Company Gas



Natural Gas is key to the clean energy transition

- 80% of customers and many industries depend on natural gas
- 75% of energy needs are met with natural gas in Illinois
- 32% reduction in CO2 emissions since 2005
- 8% growth in natural gas use by Illinois business over a 10-year period



Nicor Gas by the numbers

- Nicor Gas is an important contributor to the economy – creating jobs, making investments in Illinois
- As the largest natural gas distributor in the state, we are proud to play a significant role in the communities where we live, work and serve



\$20.6M

Rebates distributed through Nicor Gas' Energy Efficiency program



\$2.3M

Support of community, social and charitable programs across the Nicor Gas service area



\$1.3M

Covid-19 relief and support



\$449M

Spent with diverse suppliers



1M

811 utility locates processed to ensure safe digging



2.2M

Natural gas meters upgraded



\$881M

Capital Investments



151

Miles of main placed in service through Investing in Illinois



656

Communities Nicor Gas serves

Most figures are based on year-end 2020 data.

Our vision for communities of the future



Connected – with smart technologies to operate affordably, efficiently and with ease



Resilient – providing continuous and reliable energy and supporting renewables



Affordable – Infrastructure that currently delivers energy at a cost roughly one quarter that of electricity



Equitable – ensuring that clean, safe, reliable and affordable energy is accessible to all communities



Net Zero Methane by 2030

- We're driving to **net zero methane emissions** from our operations by 2030.
- Infrastructure Modernization Progress
 - Investing in Illinois Program
 - Elimination of Cast Iron (completed in 2018)
 - Elimination of Copper and PAC Services
 - RCV/SCADA upgrades
 - Storage Field Gathering Line Upgrades



*Forward means taking bold steps
toward a clean energy future.*

How we can support community sustainability goals

Community-focused energy efficiency



- Customers saved more than 168 million therms



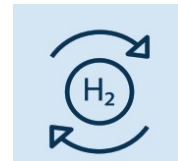
- CO2 emissions reduced by more than 893,000 metric tons

Affordable and reliable clean energy is the foundation for the future

- Renewable natural gas - Renewable Natural Gas (RNG) is a sustainable and alternative fuel produced from several sources.



- Hydrogen is a clean fuel that can easily store and deliver usable energy.



How we can support your sustainability goals

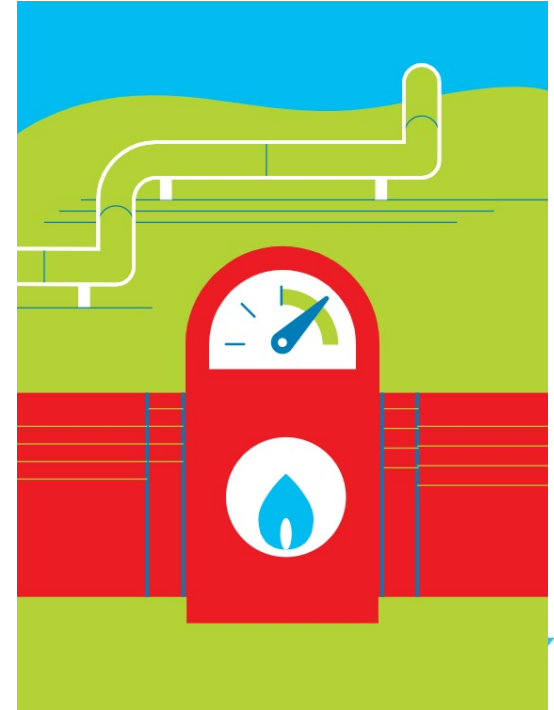
- The Smart Neighborhood Initiative is a partnership to develop a natural gas integrated net-zero community
- Resilient infrastructure to keep our communities connected



The Nicor Gas Smart Neighborhood in Sauk Village will demonstrate affordable, resilient net zero communities

Energy choice benefits residents and businesses

- Access to natural gas keeps energy costs low
- Business and residential customers saved \$24 billion over a 10-year period because of access to natural gas
- Limiting energy choice may force customers to use higher-cost energy
- Nicor Gas would like to partner with you to achieve your sustainability goals
- Nicor Gas is dedicated to improving the quality of life in the communities where we live, work and serve





Forward means taking bold steps
toward a clean energy future.

**A net-zero energy future is possible.
That's why we're fueling forward with
a goal of becoming net-zero methane
emissions from our operations by 2030.
Learn more at [nicorgas.com](https://www.nicorgas.com).**





Nicor Gas



Exploring Energy and Resiliency Partnerships

GreenTown Rockford 2021



Photo courtesy of Jonathunder

A Little Background

VISION



Together, building a thriving planet.

MISSION



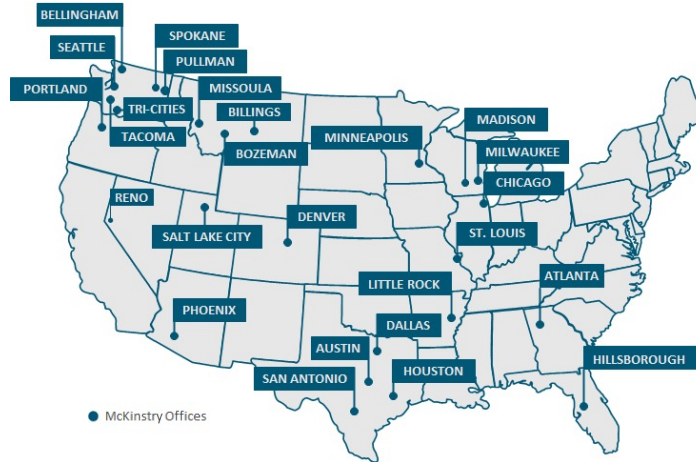
To make every building we touch more efficient.

Our Midwest Footprint



- Over **300 Midwest projects**
- More than **80%** of these projects represent *multiple phase, return customers*
- **Guaranteed** customer savings in the *hundreds of millions of dollars*

Local team backed by a deep bench



Our National Footprint

- National leader in designing, constructing, operating, and managing high-performing facilities
- Founded in 1960
- 26 offices nationwide
- 2,100+ employees
- 90+ licensed Professional Engineers
- \$700M annual revenue

Removing the Waste from the Built Environment



HALF

of the energy in buildings is wasted

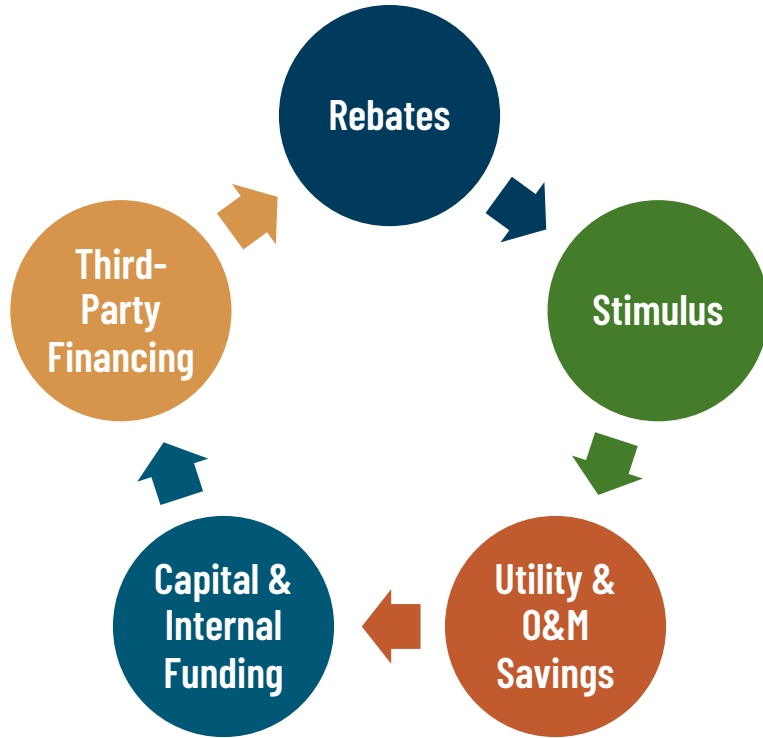
Why So Much Waste?!



Current Challenges



If It's Not About the Money, It's About the \$\$\$



Rebates

- Maximize available utility incentives

Stimulus

- Federal/State (COVID)
- Infrastructure Bills
- Appropriation Bills

Savings

- Guaranteed utility and operational savings (average 20-40% in buildings)

Capital & Internal Funding

- Leverage available capital \$s

Third-Party Financing

- McKinstry works with financing partners
- Short-term, quick payback loans (where we can support rate buydown)

Federal Funding Opportunities

2021 Appropriations Bill

Energy and Water

- Electric Vehicle Charging Infrastructure
- Renewable Energy
- Energy Storage Systems
- Energy Efficiencies
- Move to Clean Energy Technology

Timeline = Est. Dec. 2021

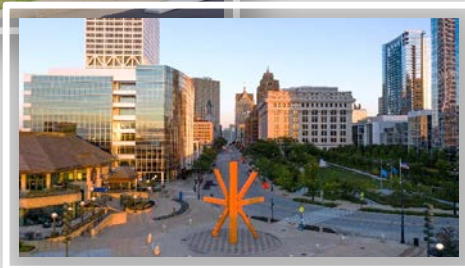


2022 Appropriations Bill

- Identify Projects – similar to 2021 process
- Prepare “Shovel Ready” Applications

Timeline = Sep. – Jan. 2022

Timeline = Jan./Feb. 2022



Bi-Partisan Infrastructure Bill

- **\$7.5 Billion for EV Charging Infrastructure**
- Senate passed – waiting for the House
- Identify EV Projects by Aug.-Dec. 2021

Timeline = Dec. 2021

“HUMAN” Infrastructure Bill

- Includes Energy Technologies/**Climate Change focused Projects**
- Access to Federal Financing for Clean Energy Projects

Timeline = Dec. 2021

An aerial photograph of a city, likely Columbus, Ohio, showing a mix of residential, commercial, and industrial buildings. A river flows through the city, crossed by a bridge. The surrounding area is lush with green trees and open fields. A semi-transparent white banner is overlaid across the middle of the image.

Folks are doing this!



Winona State University

Energy Efficiency + Solar Project

- \$12.3M of Sustainability Projects
- Self-funded from Energy Savings
- Energy Efficiency Upgrades and LED Lighting
- 1.4MW Solar Carport and 6 Rooftop Systems
- MBE/WBE Involvement
- Student Training on Energy Savings through STEM
- 26% Sustainability Plan Achievement





South Landing Eco-District - Catalyst Building

A Transformative Model for Sustainable Development *The Catalyst Building*

- “Zero-energy, zero-carbon”
- Net-positive relationship with the grid
- Zero-carbon construction and operations
- Extremely efficient central plant focused on heat recovery and energy sharing
- 11x better air sealing than code
- High performance LED
- Insulated building envelope
- Real-time data analytics
- Smart building and grid IoT



Most Sustainable Building Award in North America



Questions

Thanks for your time and consideration!

SAM BLUEMER

Senior Solutions Manager

McKinstry

815-341-2541

SamanthaB@mckinstry.com





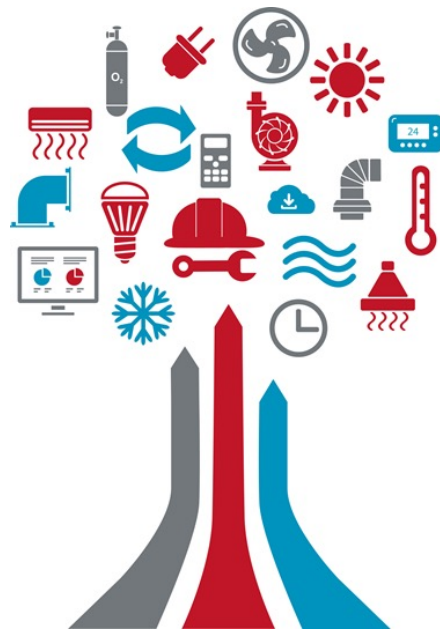
ComEd[®]
Energy Efficiency Program

Energy Efficiency for Greentown Rockford

November 12, 2021

Agenda

- » Introductions
- » Customer Experience
- » Overview of the ComEd Energy Efficiency Program
- » Offerings and Case Studies
- » Next Steps for getting involved in the ComEd Energy Efficiency Program
- » Q&A



Presenters: External Affairs and Outreach



Joe Mays
Program Manager
Resource Innovations



Kyle Saunders
Public Works Director for
Rockford

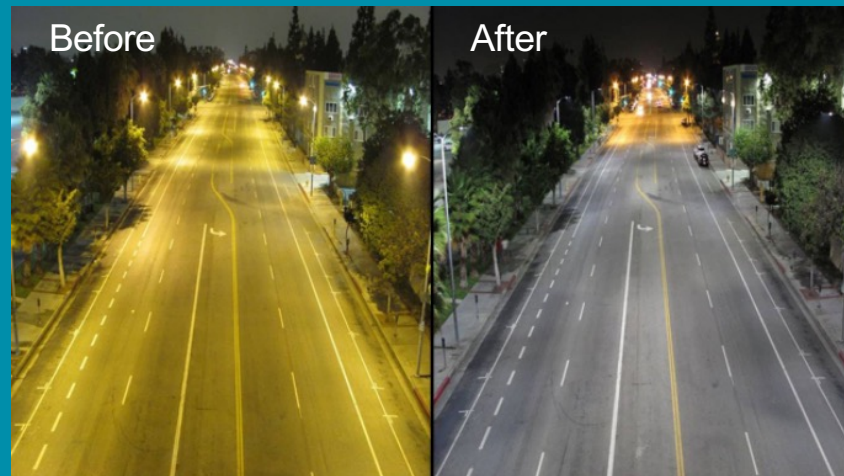
Customer Experience

Kyle Saunders

Rockford, IL

Municipally-Owned Streetlight Enhancements

- » Facilitated through ComEd's Streetlights in Distressed Communities Energy Efficiency Program
- » Secured **\$795,975** in program funding
- » Upgraded **1,782** city-owned fixtures (MH/HPS to LED)
- » Estimated Annual Energy Savings:
 - **2,069,618 kWh (50% reduction)**
- » Estimated Annual Electric Cost Savings
 - **\$101,411 (\$1.5M over 15-year useful life)**



Source: LA Bureau of Street Lighting

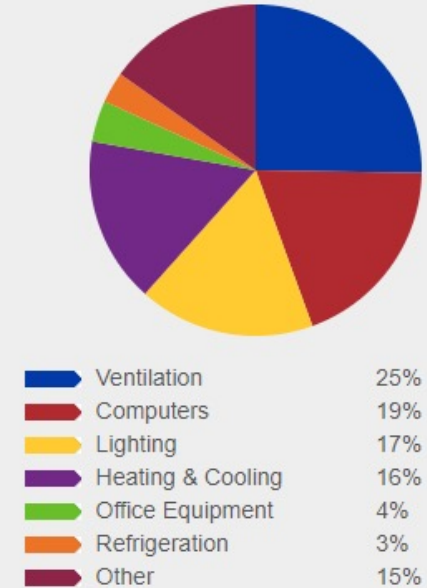


Overview of the ComEd Energy Efficiency Program

Common Municipal Barriers

- » Lack of funding and/or high upfront costs
- » Difficulty navigating program/offering details
- » Uncertainty with project savings
- » Project timelines and ROI
- » Lack of staff time, bandwidth, and/or expertise
- » Internal decision-making process
- » Prioritizing energy efficiency amongst competing needs


Electricity Consumption by Local Government Facilities



Source: U.S. Energy Information Administration

ComEd Energy Efficiency Program

- » You help fund the program!
- » Charge on monthly bill based on kWh usage
- » Funded in compliance with state law
- » Incentives available to all eligible* public sector customers within the ComEd service territory



An Exelon Company

Visit ComEd.com

Customer Service/Power Outage
English
 1.877.4COMED1 (1.877.426.6331)

Español
 1.800.95.LUCES (1.800.955.8237)

Hearing/Speech Impaired
 1.800.572.5769 (TTY)

Page 1 of 2

Account Number REDACTED

Name REDACTED

Service Location REDACTED

Phone Number REDACTED

Issue Date: November 16, 2017


Bill Summary

| | |
|---------------------------------------|-------------------|
| Previous Balance | \$2,078.31 |
| Total Payments - Thank You | \$2,078.31 |
| Amount Due on December 1, 2017 | \$2,974.12 |

Meter Information

| Read Date | Meter Number | Load Type | Reading Type | Previous | Meter Reading Present | Difference | Multiplier X | Usage |
|-----------|--------------|-----------------|--------------|----------|-----------------------|------------|--------------|--------|
| 10/18/17 | REDACTED | General Service | Total kWh | Actual | Actual | | | 120289 |
| 10/18/17 | REDACTED | General Service | On Pk kWh | Actual | Actual | | | 238.08 |

Your Usage Profile
13-Month Usage (Total kWh)



| Month | kWh |
|--------|---------|
| Nov-16 | 130,205 |
| Dec-16 | 147,295 |
| Jan-17 | 159,338 |
| Feb-17 | 131,719 |
| Mar-17 | 133,448 |
| Apr-17 | 131,228 |
| May-17 | 121,071 |
| Jun-17 | 143,108 |
| Jul-17 | 154,712 |
| Aug-17 | 137,806 |
| Sep-17 | 132,867 |
| Oct-17 | 138,126 |
| Nov-17 | 120,286 |

| Month Billed | Average Daily kWh | Temp. |
|--------------|-------------------|-------|
| (Last Year) | 4489.8 | 53 |

Service from 10/18/2017 to 11/16/2017 - 29 Days **Retail Delivery Service - 100 kWto 400 kW**

Delivery Services - ComEd **\$1,809.76**

| | |
|------------------------------------|---------------------------------|
| Customer Charge | 24.55 |
| Standard Metering Charge | 29.12 |
| Distribution Facilities Charge | 238.08 kWh X 6.79000 = 1,616.56 |
| IL Electricity Distribution Charge | 120,286 kWh X 0.00116 = 139.53 |

Taxes and Other **\$1,164.36**

| | |
|---------------------------------|---------------------------------|
| Environmental Cost Recovery Adj | 120,286 kWh X 0.00005 = 6.01 |
| Renewable Portfolio Standard | 120,286 kWh X 0.00094 = 113.07 |
| Zero Emission Standard | 120,286 kWh X 0.00195 = 234.56 |
| Energy Efficiency Programs | 120,286 kWh X -0.00046 = -55.33 |
| Franchise Cost | \$1,804.46 X 1.41500% = 25.53 |
| State Tax | 371.47 |
| Municipal Tax | 469.05 |

Total Current Charges **\$2,974.12**

Taxes and Other **\$1,164.36**

| | | | | |
|---------------------------------|-------------|---|----------|--------|
| Environmental Cost Recovery Adj | 120,286 kWh | X | 0.00005 | 6.01 |
| Renewable Portfolio Standard | 120,286 kWh | X | 0.00094 | 113.07 |
| Zero Emission Standard | 120,286 kWh | X | 0.00195 | 234.56 |
| Energy Efficiency Programs | 120,286 kWh | X | 0.00046 | -55.33 |
| Franchise Cost | \$1,804.46 | X | 1.41500% | 25.53 |
| State Tax | | | | 371.47 |
| Municipal Tax | | | | 469.05 |

*Municipalities with franchise agreements do not qualify, since they do not pay into the fund.

ComEd Energy Efficiency Program



FREE Assessments

- Whole facilities



Incentives

- Lighting
- HVAC systems
- Energy Management Systems
- IT rooms
- New construction
- LED streetlights
- Variable Speed Drives



Instant Discounts

- Lighting
- HVAC
- Forklift battery chargers



Optimization

- Whole-building retro-commissioning
- Rooftop units
- Refrigeration and cooling
- Compressed air

Facility Assessments

- » A ComEd representative will walk through your facility and identify a variety of ways to save energy.
- » We will deliver a customized assessment report identifying:
 - No-cost/low-cost operational improvements
 - Potential annual energy and dollar savings
 - Incentives
 - Simple payback timeframes
- » Contact us to schedule your assessment, which can be virtual or in-person*
- » [ComEd.com/FacilityAssessment](https://www.comed.com/FacilityAssessment)



Standard Offering

- » Incentives for upgrades such as [lighting*](#), [HVAC](#), [energy management](#), [compressed air](#) and more
- » Provides incentives on a per-unit or per-fixture basis
- » No reservation required for incentives of less than \$1,000
 - No pre-application required!
 - Purchase qualifying equipment and start your project immediately
- » Download the standard application and incentive worksheets at ComEd.com/Applications
- » Apply for incentives online at ComEd.com/StandardOnlineApp



Standard Offering

Case Study: Zion-Benton Public Library

- » Free facility assessment
- » Outdoor and indoor lighting upgrades, plus building energy management system
- » ComEd incentives reduced project cost by \$12k
- » Reduced annual energy cost by \$4.2k
 - Savings of 47.6k kWh per year
- » Estimated project payback of four (4) months



Small Business Offering

- » For public sector facilities with peak demand up to 400 kW
- » Closed Service Provider network
- » Lead generation supported by Small Business Kit program
 - Call center and Salesforce lead integration



Small Business Case Study: City of Freeport

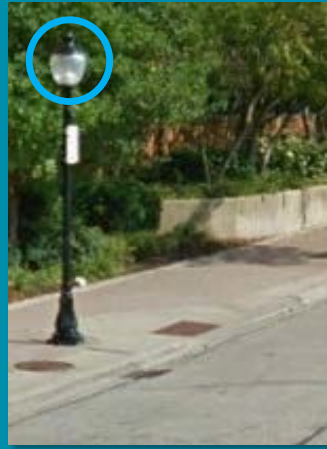
- » ComEd worked with the city for several projects and incentives:
 - High-bay light fixtures for Road Department truck bays
 - Lights for airport ramp and hangars
 - Estimated annual electric cost savings \$27k (or 301k kWh)
 - Project cost \$115k, incentive \$63k
 - Payback less than 2 years

- » City Manager Crow was very pleased and shared story with local paper and ILCMA



LED Streetlight Offering

- » Municipally owned streetlights
- » 70 cents per watt reduced
- » Incentive not to exceed 75% of total project cost (materials and external labor)
- » Requirements
 - Must be lighting the street on a public road
 - Design Lights Consortium (DLC) listed fixture or retrofit kits
 - 10 kV surge protection



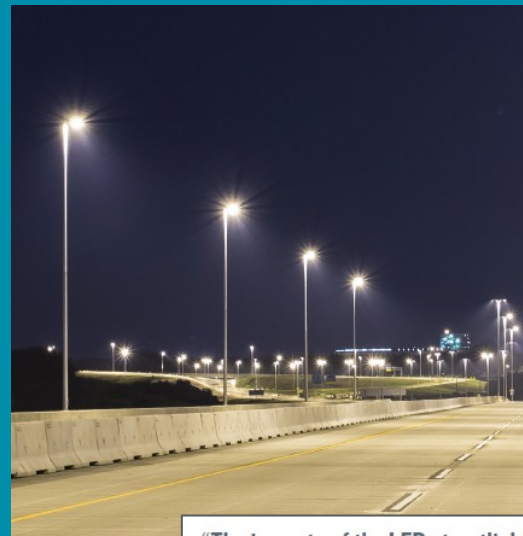
Retrofit kit:
Streetlight
Incentive



Bulb:
Instant
Discount

LED Streetlight Case Study: Village of Montgomery

- » 889 streetlights upgraded to high-efficiency LED fixtures and bulbs
- » ComEd incentives reduced project cost by 36%
- » Reduced annual energy cost by \$20k
 - Reduced energy use by 65%



“The impacts of the LED streetlights have been very beneficial for the Village of Montgomery. The ability to perform this work in a phased approach has enabled the Public Works Department staff to perform the change out of light fixtures internally. This was a major benefit to reducing costs of the project and completed the project in a timely manner. The Village looks forward to future benefits such as reduced energy rates, increased visibility for the public, and uniformity in lighting throughout the Village. The process to complete this project with ComEd was streamline and effective.”

Mark Wolf, Director of Public Works,
Village of Montgomery

Custom Offering

- » For project ideas, download the custom incentive ideas at ComEd.com/Custom for energy efficiency improvements that are not included in the Standard offering. For example - Ornamental LEDs and Elevator Regenerative Drives
- » Download the Custom incentives fact sheet at ComEd.com/BizIncentives
- » For projects in development, submit an **optional** Custom Intake Form to receive feedback from our engineering team before applying for incentives.
 - Contact your Outreach Professional or email BusinessEE@ComEd.com to request a form

ComEd.
Energy Efficiency Program

CASE STUDY

Custom Incentive Ideas

Go beyond common retrofits and earn incentives through the ComEd® Energy Efficiency Program for facility and process improvements that save energy.

Custom incentives are based on actual energy savings, and options include everything from custom lighting to installing a cogeneration plant. Whether you're installing new light fixtures, adding variable speed drives (VSDs) to equipment motors or making process system enhancements, ComEd can help make your project more cost effective.

Take advantage of incentives that range from 7 to 12 cents per kWh saved depending on your project. Certain upgrades to water and wastewater treatment facilities can earn up to 21 cents per kWh saved. Measurement and verification may be required, but is typically waived for projects with incentives of \$25,000 or less. ComEd offers FREE tools to help you estimate your project's potential energy savings and incentive. It's easier than ever to turn your energy-saving ideas into reality!

Need ideas to get started? Below are completed projects from actual ComEd customers.

Process Cooling

Project Cost:
\$39,500
Incentive Received:
\$22,150
Estimated Annual Energy Savings:
184,000 kWh
Estimated Annual Cost Savings:
\$22,150
Estimated Payback Period:
0.8 years



A customer achieved energy savings by replacing 17 stand-alone process chiller units with a more efficient 160-ton central chiller system. In addition to the incentives they received from ComEd, they saved more than 180,000 kWh with a payback of less than one year!

Elevator Regenerative Drive

Project Cost:
\$141,750
Incentive Received:
\$29,556
Estimated Annual Energy Savings:
246,302 kWh
Estimated Annual Cost Savings:
\$22,044
Estimated Payback Period:
5.1 years



This customer installed regenerative drives to power their nine-story building's six elevator banks efficiently. Instead of wasting the energy generated by an elevator's counterbalance and dispersing it into heat within the machine room, regenerative drives store and use that energy later. That translates to lower cooling, operating and maintenance costs.

ComEd | powering lives
An Exelon Company



installed 300 new high-brightness nine of its chronically commutated or features to help them



nt cooling to their replaced their existing omizer and circulation ficantly reduced energy wing a payback time of

Get started today. Visit ComEd.com/Custom, email BusinessEE@ComEd.com or call 855-433-2700.

Terms and conditions apply. Offers are subject to change. Actual savings will vary by customer's energy usage and rates. ©ComEd and its Exelon Company 2019. The ComEd Energy Efficiency Program is funded in conjunction with state law.

ComEd | powering lives
An Exelon Company

Instant Discounts

- » Includes point-of-sale discounts on qualified Lighting, HVAC equipment and battery charger products
- » Sold through [participating distributors](#)
- » Look for this sticker in stores and save:



**LOWER
PRICE**

ComEd
An Exelon Company

INSTANT DISCOUNTS

LIGHTING PRODUCT CATEGORIES & ELIGIBILITY

ComEd commercial, industrial and public sector customers are eligible for instant incentives at the time of purchase on qualifying lighting and exit sign products through participating distributors.

Find a participating distributor at ComEd.com/BizLights



| SCREW-IN / PIN-BASE / OTHER PRODUCTS | INCENTIVES | SPECIFICATIONS | | | |
|---|----------------|----------------|-------------|-------------|---------------------|
| | | ENERGY STAR* | DLC* LISTED | UL* LISTED* | NON-LISTED CATEGORY |
| Directional MR lamps | \$3 / Lamp | X | | | |
| Directional PAR 16 & 20 lamps | \$6 / Lamp | X | | | |
| Directional PAR 30 lamps | \$8 / Lamp | X | | | |
| Directional PAR 38 lamps | \$10 / Lamp | X | | | |
| Directional reflector lamps | \$4 / Lamp | X | | | |
| ENERGY STAR fixtures ≤ 20W | \$6 / Fixture | X | | | |
| ENERGY STAR fixtures > 20W to ≤ 40W | \$10 / Fixture | X | | | |
| ENERGY STAR fixtures > 40W | \$25 / Fixture | X | | | |
| Decorative lamps | \$3 / Lamp | X | | | |
| Screw-in HID LED - mogul base ≤ 100 watts | \$25 / Lamp | | X | | |
| Screw-in HID LED - mogul base > 100 watts | \$55 / Lamp | | X | | |
| Screw-in HID LED - medium base | \$20 / Lamp | | | | X |
| 4 Pin-base LED | \$5 / Lamp | | X | | |
| 4 Pin-base LED (G24q/GX24q > 18W) | \$5 / Lamp | | | | X |
| 2 Pin-base LED | \$5 / Lamp | | | | X |

* Must be UL listed in addition to other specifications noted above.

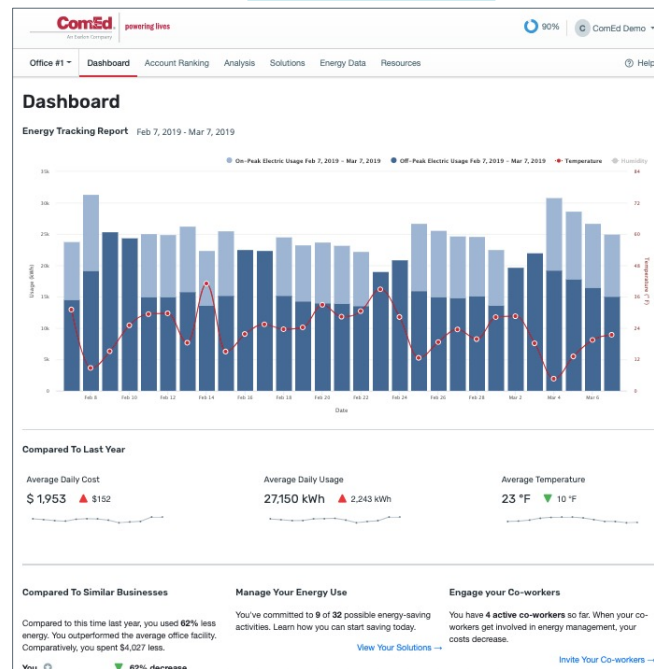
Business Energy Analyzer (BEA)

» Free online tool to help you:

- Analyze energy use
- Manage energy across multiple buildings or sites
- Explore energy efficiency solutions during your Facility Assessment



» Sign up quickly and easily with your account number and ZIP: ComEd.com/BEA



Retro-Commissioning (RCx)

- » Multi-option offering servicing large commercial, industrial, manufacturing, medical and more facilities
 - RCx Flex offers performance-based incentives for facilities with > 0.5 GWh annual energy use
 - Monitoring-Based Commissioning (MBCx) for 150,000+ square foot facilities with > 2 GWh annual energy use
 - Virtual Commissioning (VCx) offering fully-funded remote analysis and technical assistance
- » Provided through authorized Service Providers



RCx Flex Case Study: Aurora Public Library (Eola Branch)

- » Lighting and air-handling unit automation ensured optimal, situational energy use
- » Duct static pressure, boiler supply temperature reset, and rooftop unit economizer created optimal atmosphere and reduced maintenance needs
- » Reduced annual energy cost by \$15k
 - Savings of 166k kWh per year
- » Immediate project payback



New Construction

» Provide Technical Assistance and [Incentives](#) for new construction and major renovation projects

» Partners with gas utilities

» Eligibility:

- Minimum of 5,000 ft.²
- Must engage ComEd early in design
- Design must exceed current Illinois Energy Conservation Code
- Must implement significant beyond-code energy conservation measures for at least two of these primary building systems:
 - Envelope
 - Primary HVAC
 - Lighting
 - Qualified refrigeration



New Construction Case Study: City of Countryside

- » One of first **NET ZERO** municipal buildings in Illinois
- » Incentives are based on the implementation of beyond-code improvements to the building envelope, lighting and HVAC. Other incentivized energy efficiency measures include:
 - Efficient LED lighting, both interior and exterior
 - Improved window and wall thermal performance
 - Efficient ventilation system (dedicated outdoor air with enthalpy wheel heat recovery)
- » Reduced annual energy cost by estimated \$18.7k*
 - Savings of 209k kWh per year



Strategic Energy Management

- » Year-long series of workshops and one-on-one coaching sessions to reduce energy costs and greenhouse gas emissions
- » Incentives for energy savings related to low-/no-cost solutions driven by operational and behavioral changes
 - **Additional milestone incentives offered for creation of an energy team, non-binding energy charter, and monthly check-ins with Energy Coach**
- » Statistical energy models for tracking performance and forecasting
- » Focus on continuous improvement and integrating Lean Six Sigma
- » Partners with gas utilities



Strategic Energy Management: UW Health Sports Factory

- » Participant in the Municipal & Public Sector first-year Cohort in 2020-2021
 - Strong Energy Team that is actively engaged and continues to grow and become more robust for their 2nd year in SEM (2021-2022)
- » Saved estimated **346k kWh** in the first year through the implementation of low-/no-cost projects – a **22%** savings reduction of their baseline usage
- » Reduced annual energy cost by \$31k*



Next Steps for Getting Involved

Get Started

- » Great first step – FREE Facility Assessment
 - ComEd.com/FacilityAssessment
- » Contact your ComEd EE team
 - Call: 1-800-EDISON-1 (1-800-334-7661)
 - Visit the Website: ComEd.com/PublicSector
 - Contact your External Affairs (EA) Manager, Large Customer Service (LCS) Manager, or Outreach Service Provider (OSP)



Local Outreach Service Provider (OSP)



Joe Mays

jmays@resource-innovations.com

(219) 307-2695



Vanessa Perkins

vperkins@resource-innovations.com

(408) 368-3105



Tomás De'Medici

tdemedici@resource-innovations.com

(708) 420-1377

Questions?

Helpful Resources

REQUEST A FACILITY ASSESSMENT

ComEd.com/FacilityAssessment

GIVE US A CALL

855-533-2700

VISIT US ONLINE

ComEd.com/BusinessSavings

ComEd.com/HomeSavings

ComEd.com/IncomeEligible

SEND US AN EMAIL

BusinessEE@ComEd.com

PublicSector@ComEd.com

GET STARTED WITH BUSINESS ENERGY ANALYZER

ComEd.com/BEA

ACCESS THE ENERGY USAGE DATA TOOL

EnergyUsageData.com

ENROLL IN SMART RETURNS VOLUNTARY LOAD REDUCTION PROGRAM (VLR)

SmartReturns@exeloncorp.com

TAKE THE FIRST STEP TO GO SOLAR BY LEARNING ABOUT YOUR SOLAR OPTIONS TODAY

ComEd.com/Solar

LEARN MORE ABOUT EV

[ComEd EV Savings, Benefits & Incentives](#)





Thank You!

ComEd[®]
Energy Efficiency Program

Joe Mays | jmays@resource-innovations.com | Cell: 219-307-2695

Ameresco

Your Trusted Sustainability Partner



[amesesco.com](https://www.ameresco.com)

© 2021 Ameresco, Inc. All rights reserved.

About Ameresco

Ameresco (NYSE:AMRC) is a leading energy services company with a comprehensive portfolio of energy efficiency and renewable energy solutions.

Founded in 2000 | Public in 2010



Comprehensive Portfolio

Objective approach and in-house technical expertise delivers the most advanced technologies to meet the unique needs of each customer. Majority of projects are budget-neutral, funded by energy cost savings.

Customer Driven

Federal & Municipal Governments, Commercial & Industrial, Higher Ed, K12, Public Housing, Healthcare, Airports. Market reputation across North America & Europe for excellence in customer satisfaction.



\$10+ Billion in energy solution projects, 250+ MWe of Owned Assets in Operation



1,000+ Employees providing local expertise throughout United States, Canada, and the UK



\$3.5+ Billion in Financing sourced and raised for customer projects



8,000+ Customers benefitting from energy efficiency measures and renewable energy generation



Up to 45% Energy cost savings with comprehensive, audit-based improvements



In 2019, our renewable energy assets and customer projects delivered a carbon offset equivalent to **11,167,978 metric tons of CO₂**

Local Illinois Team



REGIONAL HEADQUARTERS

10 S. LaSalle Street



OVER \$1 BILLION

In Illinois Projects



M/WBE

Local projects meet or exceed participation requirements



LOCAL PERFORMANCE-BASED OPERATORS Of Central Plant Assets



ROBUST LOCAL STAFF

Who Live In Illinois



LICENSED ILLINOIS

Design Firm / Professional Engineering Corporation



LICENSED CITY OF CHICAGO

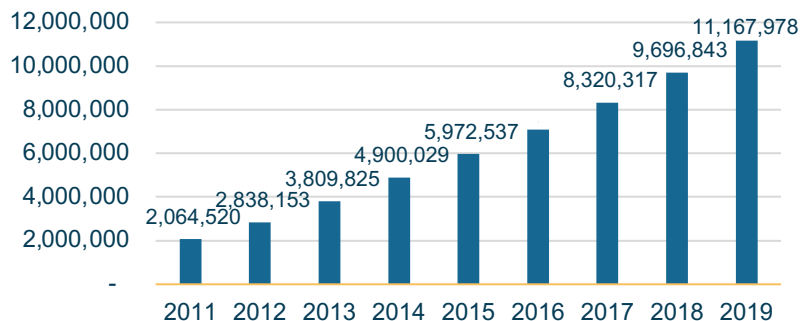
General Contractor

Enabling a Low Carbon Future

In 2019, Ameresco's renewable energy assets & customer projects delivered a Carbon Offset equivalent to:

50+ Million Metric Tons of CO₂

Aggregate Metric Tons of CO₂ Avoided Per Year



Ameresco's 2019 Carbon Offset of **11,167,978 Metric Tons of CO₂** is equal to one of...

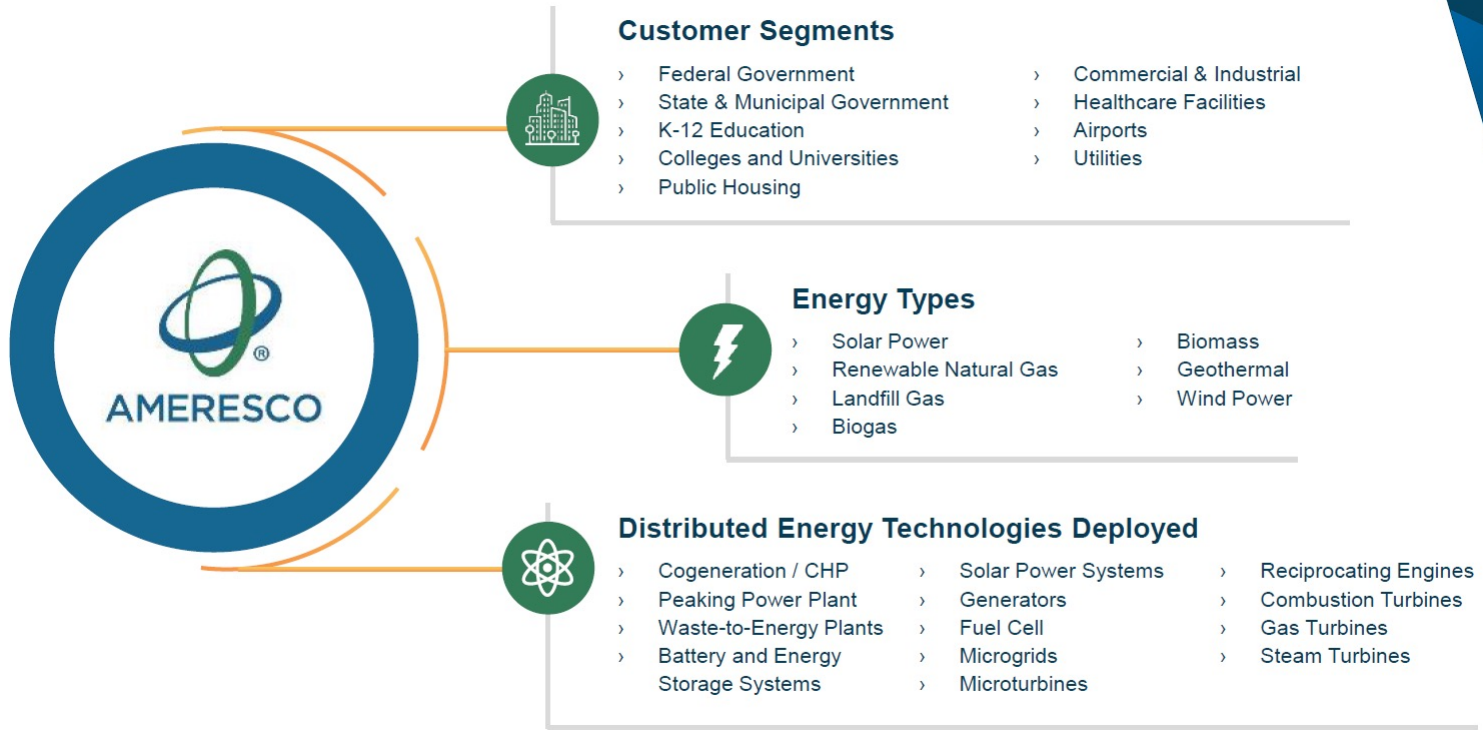


Greenhouse gas emissions from... **27,712,104,218 miles driven by an average passenger vehicle**



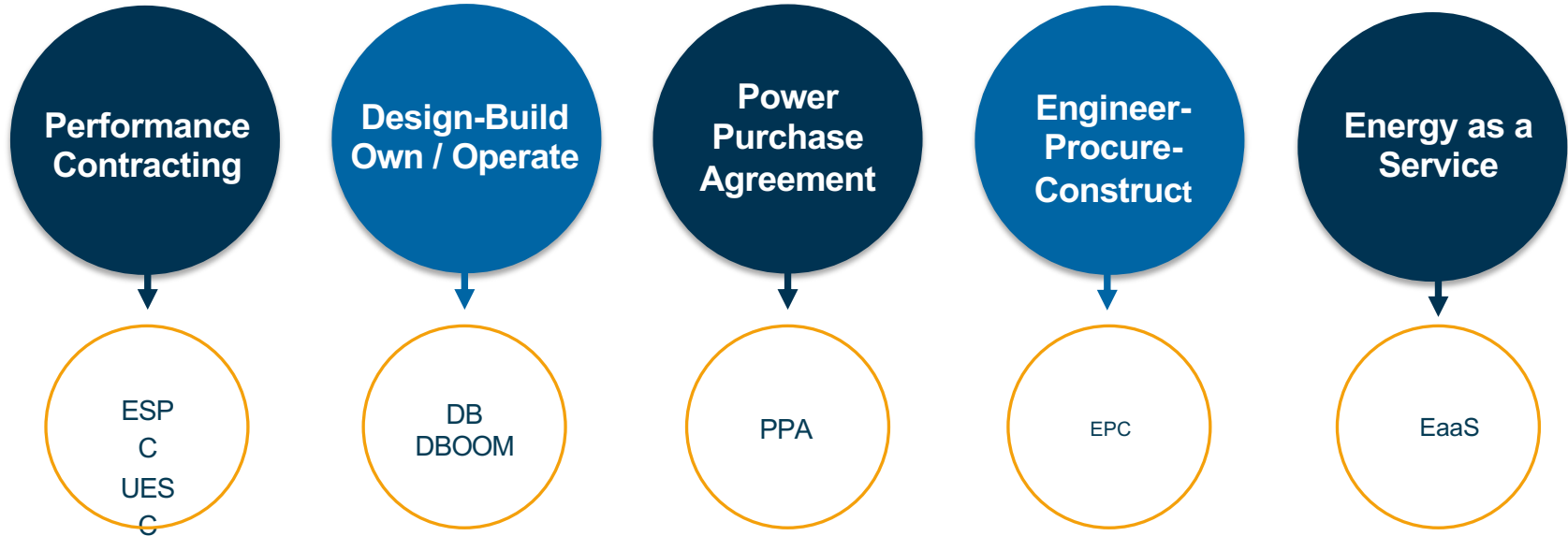
Carbon sequestered by... **14,584,861 acres of U.S. forests in one year**

Ameresco's Diversified Approach



Types of Financing Structures

Budget-neutral infrastructure upgrades use energy savings to pay for projects over time.



Design-Build Examples

City of Rockford Streetlighting Project



Smart
LED
Lighting

**INNOVATIVE
FUNDING**
with renewable
energy certificates,
grants, utility rebates
& tax credits

Replacing older inefficient lighting with LED

Reduce energy costs & consumption by 60-70%

Save up to 80% on long term maintenance costs

Improve community safety & security

Ameresco can provide community outreach to showcase how your **LED street light conversion addresses your commitment to safety & sustainability.**

Communit
y
Outreach



City of Chicago Streetlighting Project

Both projects are receiving funds from the ComEd LED Streetlight Replacement Program

Energy Services Performance Contracting



Unified Government of Wyandotte County and Kansas City Project

ARP
Allocation


In just six weeks, developed and constructed \$2M in Cares Act funds across multiple county facilities.

Currently leading the funding allocation process for ARP projects that amount to \$25M in investment into county infrastructure.

Multi-Phase project

INNOVATIVE
FUNDING
Cares Act
& ComEd Renewable
Rebates

Solar &
BESS



Troy CUSD Solar & Energy Project

Power Purchase Agreement Example

DePue Solar Farm Project



27 MW Solar Farm – In Construction

County Tax – property taxes on the brownfield solar farm will be delivered annually to Bureau County

Permitting Fees - Village of DePue will collect permitting fees for solar farm site construction from Ameresco.

ENERGY REBATE

DePue will receive approximately \$10,000 annually to offset Village energy costs

Renewable Energy – the project will make a significant contribution towards Illinois's 2025 renewable energy goals



Long-Term Energy as a Service (EaaS) Agreement

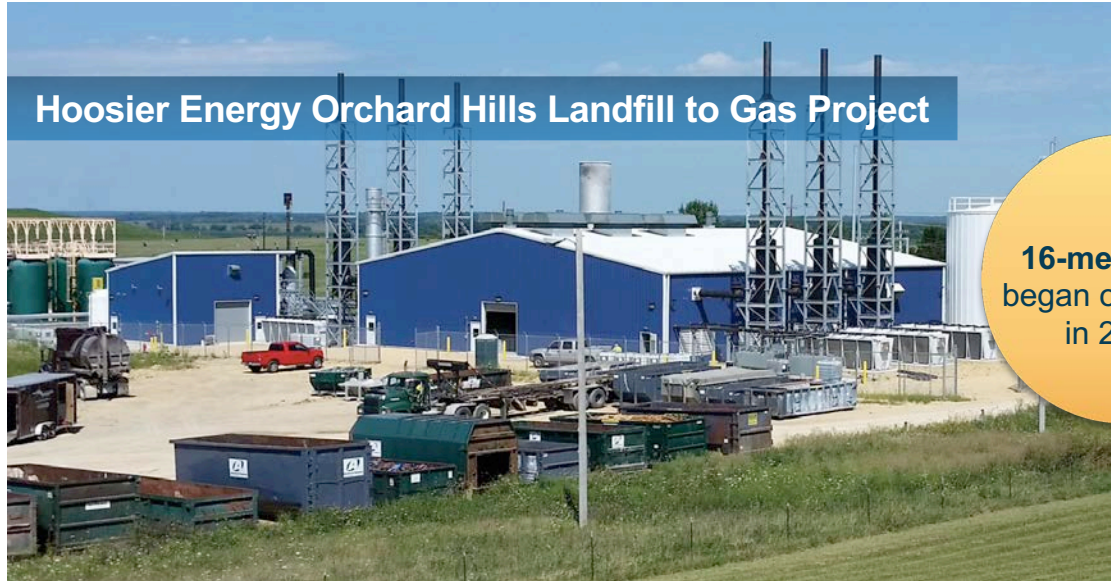


Northwestern University
175 Buildings & Central Plants

**30% Reduction
in Greenhouse
Gas Emissions
By 2030**

Ameresco will provide ongoing energy management and related services in addition to identifying and implementing energy efficiency upgrade, for the campus.

Design-Build-Own-Operate Example



Hoosier Energy Orchard Hills Landfill to Gas Project

16-megawatt
began operation
in 2016

Instead of being flared into the atmosphere, **LMG facilities capture the methane gas and transform it into a renewable source of fuel** to power generators around the clock.

Owned by Hoosier, Ameresco designed, developed and implemented the plant, and now operate the plant

Solutions and Savings

Public Building Commission 36 Buildings Across Chicago



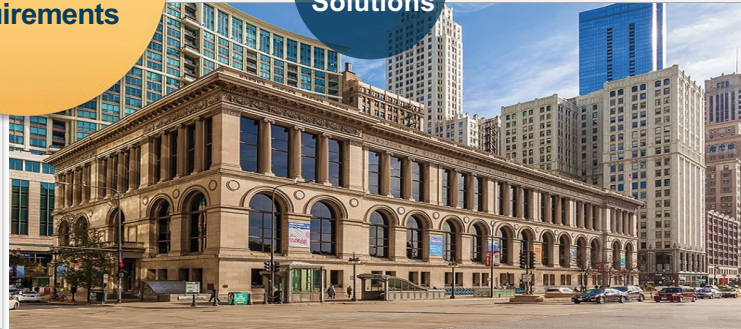
Annual
Savings

8,591,676 kWh annually
16,597 MMBTU annually
\$702,178 annually

Exceeded
M/WBE Hiring
Requirements

Tailored
Solutions

Savings Measures Included:
Retro-commission Mechanical
Systems Lighting & Lighting
Occupancy Sensors HVAC Systems
Upgrade, Demand Control
Ventilation, Controls Upgrade to
DDC, New Building Automation
System,
New boilers and chillers



Why Ameresco?



Innovative

Ameresco (NYSE:AMRC) is an innovative technology integrator with a comprehensive portfolio of energy efficiency and renewable energy solutions.



Experts

We deliver a broad and deep solution portfolio within a single energy partner. From design and development to financing and construction, our in-house technical expertise sets us apart.



Independent

Our objective approach enables us to implement the most advanced technologies to meet the unique needs of each customer.



Thank You!

Ameresco, Inc.
Diana Vargas
Senior Account Executive

green
town

GreenTown Rockford

November 12 | Embassy Suites Rockford Riverfront